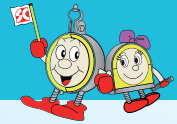


## Bracket for A/C & Refrigerant Piping SC Keep Hanger for Multiple Pipes (3 Pipes) & Men Guard Specifications



Parallel  
Installation Type

### Optimal for Multiple Pipes!

Large Knobs  
(With Leveling)

Feature 3

Easy!  
One-Touch Adjustment

Leveling knobs are used for easy adjustment.

Feature 5

OK for Supporting Electrical Wires.  
"Smooth"

Independent and exclusive spaces for electrical wires (cables) have been installed. Wires can be added anytime.



Safe! Rotation Lock System

Excessive impact can be handled by the band open/close portion, so it can be used without worry.

Feature 2:

STOP!  
Condensation

Environmentally Friendly  
Plating Compliant with  
RoHS Directives

Secure!  
Double Lock  
System

Feature 4:

Slide Pin Lock

Safe piping support is ensured. Insert the slide pin after determining the pipe position.

Feature 1:

Keep

Revolutionary Idea!  
Men Guard

Main feature of the "SC Keep Hanger"!! The area that holds the weight of the piping is increased, which prevents the pipe jacketing from being smashed.

\*Men guard MGH1(BK) should be used. (Sold separately)

Feature 6:

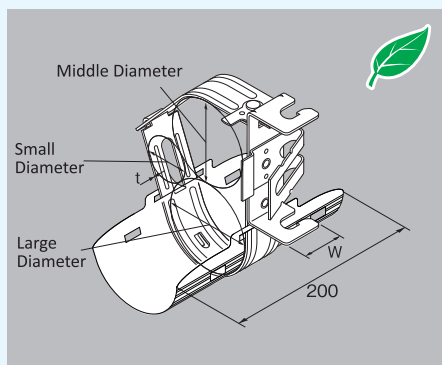
Temporary  
Attachment!

Pipes can be attached temporarily! Pipe positions can be determined during construction, which improves work efficiency.

KETS

SC Keep Hanger Parallel Installation Type for Multiple Pipes (3 Pipes) Men Guard Specifications (Sold Separately)

PAT.P



- This product is a pipe brace attached to M10 threading.
- By using the Men guard for the hanging band (polypropylene), the area that receives the weight is increased, which prevents the jacketing material from being smashed.
- The main body is made of steel (trivalent chromate treatment)
- Allowable static load: 20kgf
- ⚠ If excessive load is applied, deformations cannot be corrected. In this case, do not use it.
- ⚠ A rotation lock is used at the band open/close portion, and a slide pin lock is used at the bolt attachment location. However, an impact load must not be applied. May result in damage or collapse.
- The number in the parentheses for quantity indicates the quantity in the pouch.

Model No.	Compatible Men Guard	Insulation Thickness	Compatible Pipes	Small Diameter	Middle Diameter	Large Diameter	W	t	Quantity	Delivery Date Confirmation
KETS820			12.7×22.22×25.4	33	63	66			40(10)	
KETS920	MGH1	10×20×20	15.88×25.4×28.58	36	66	69	32	1.5	40(10)	
KETS1020	(BK)		19.05×28.58×31.75	40	69	72				
KETS1220			19.05×31.75×38.1	40	72	79				

🌿 The mark indicates compliance with RoHS directives. \*Men Guard MGH1(BK) should be used. (Sold separately)

### Safe Construction!

#### Slide Pin Lock Installation Process

- Features
- After the slide pin lock is installed, sliding of the threaded rod can be prevented even when excessive "impact" is applied to the threaded rod bolt fixing portion.
  - Made from resin for safe installation.
  - One-touch installation is possible.
  - ⚠ When used repeatedly, the resin may become deformed. If the resin becomes deformed, it can no longer be used.

