

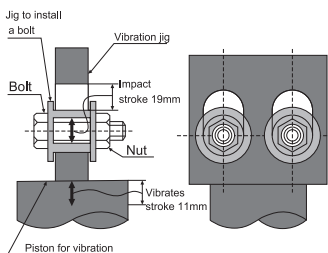
# Quality

## Difficult for a nut to loosen

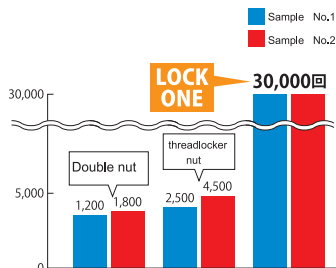
- 30000 times are cleared in a testing machine which fits in NAS3350 standard.
- The size from M4 to M24 is prepared

### About a vibration test

#### Test using fixture



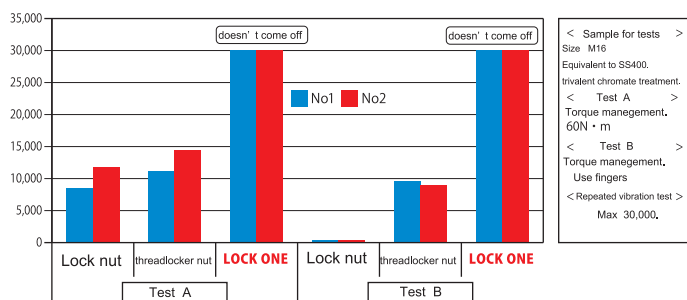
#### Test outcome



Sample for tests : Size M16, / Equivalent to SS400, / Hot dip galvanize, / Torque management 75N·m  
 Test method : It vibrates perpendicularly to a bolt, MAX 30,000 times

#### Comparative test

Testing condition			Test outcome			
Torque management	Product	Torque	Sample No.	The number of coming off (MAX 30,000)	Gap of the nut when a test has ended	Note
Test A Using the tool	Lock nut (Other company)	60N·m	No1	8,353	—	
			No2	11,699	—	
			Average	10,026		
	threadlocker nut (Other company)	60N·m	No1	11,502	—	
			No2	14,552	—	
			Average	13,027		
	LOCK ONE	60N·m	No1	doesn't come off	0mm	
			No2	doesn't come off	0mm	
			Average	—	0mm	
Test B Use fingers	Lock nut (Other company)	N/A	No1	662	—	
			No2	660	—	
			Average	611		
	threadlocker nut (Other company)	N/A	No1	9,655	—	
			No2	8,691	—	
			Average	9,173		
	LOCK ONE	N/A	No1	doesn't come off	0.5mm	
			No2	doesn't come off	0.1mm	
			Average	—	0.3mm	



< Sample for tests >  
 Size M16  
 Equivalent to SS400.  
 Invariant chromate treatment.  
 < Test A >  
 Torque management,  
 60N·m  
 < Test B >  
 Torque management,  
 Use fingers  
 < Repeated vibration test >  
 Max 30,000,

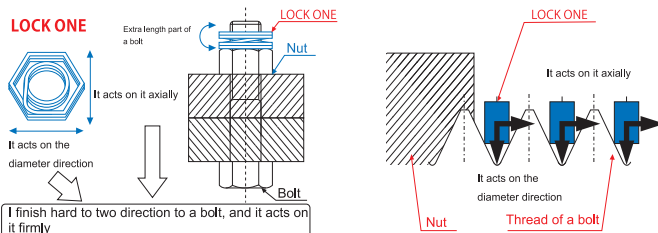
# Use

## Management is easy

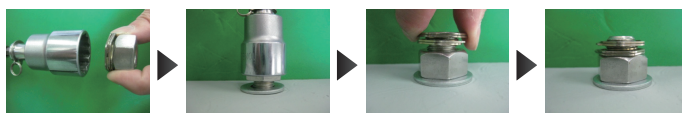
## Work is easy

- ◆ It's practicable for both of repair and building.
- ◆ It also corresponds to retightening and torque management.
- ◆ It's installed by a general tool.
- ◆ A special tool isn't used.

### The retentivity which acts on a thread

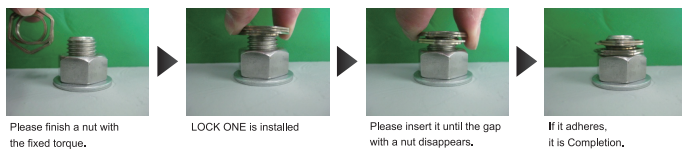


#### Mounting method using a socket wrench



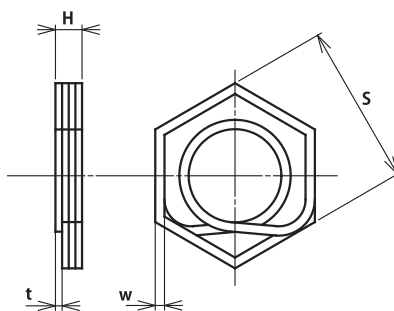
□ It's installed in the part where more than 3 threads are left.

#### Way using a finger



□ It's installed in the part where more than 3 threads are left.

#### Dimension table (SUS304-WPB)



Size	(S)	(w×t)	(H)
M4	7	0.50×0.35	1.40
M5	8	0.60×0.40	1.60
M6	10	0.70×0.50	2.00
M8	13	0.88×0.63	2.50
M10	17	1.05×0.75	3.00
M12	19	1.23×0.88	3.50
M16	24	1.40×1.00	4.00
M20	30	1.75×1.25	5.00
M22	32	1.75×1.25	5.00
M24	36	2.10×1.50	6.00



<http://www.sanko-kk.net>

※LOCKONE® is a registered trademark of SANKO

# Safety

## The high safe performance

- ◆ It's possible to repeat it and use.
- ◆ There are no coming to plating and influence transformed by use repeatedly.
- ◆ Late, occurrence of rust also has a low
- ◆ There are little discoloration by salt water spray and progress of galvanic corrosion between the dissimilar metal.

# Results

## Industry results

“LOCKONE” is various industry and adoption is decided about.