

Flexible air-conditioner duct

New!

SC Flex

Sound-absorbing type

Thermal-insulation type

Highly pressure resistant!

Specifications to prevent the main body from being crushed by using a galvanized sheet iron clip as a core material

Sound-absorbing type

Thermal-insulation type

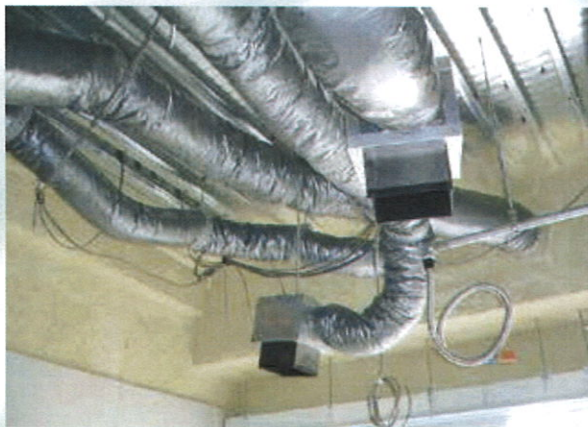
Excellent sound-absorbing performance

Using polyester nonwoven fabric for the inside achieves high sound-absorbing performance.

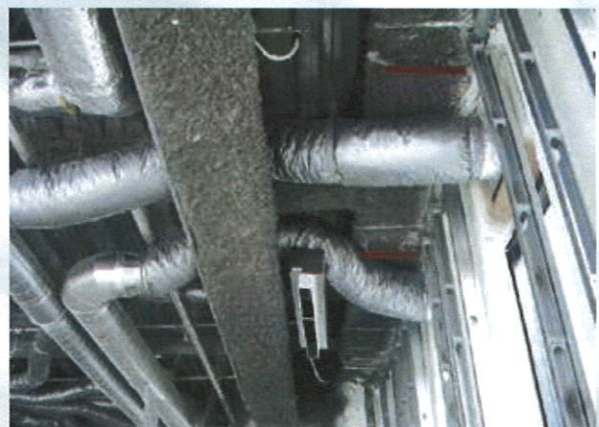
Excellent thermal-insulation function

Covering the inside made of glass wool with polyester film achieves high thermal-insulation effect.

Sound-absorbing type



Thermal-insulation type



* Installation image



SHOWA corporation

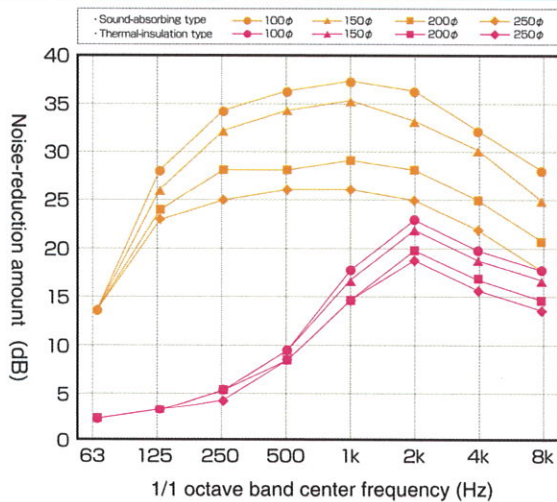
| Nominal diameter (φ) | Inside diameter (φD) | Manufacturing length range |
|----------------------|----------------------|----------------------------|
| 75 | 83 | 5 |
| 100 | 108 | 10 |
| 125 | 133 | 10 |
| 150 | 158 | 10 |
| 175 | 183 | 10 |
| 200 | 208 | 10 |
| 225 | 233 | 10 |
| 250 | 258 | 10 |
| 275 | 283 | 10 |
| 300 | 308 | 10 |
| 325 | 335 | 10 |
| 350 | 360 | 10 |
| 375 | 385 | 10 |
| 400 | 410 | 10 |

Recommended use range

| | |
|-----------------------|---|
| Usable pressure | Sound-absorbing type : - 200Pa~500Pa |
| | Thermal-insulation type : - 200Pa~800Pa |
| Usable temperature | - 5°C~60°C |
| Maximum airflow speed | 15m/s or less |

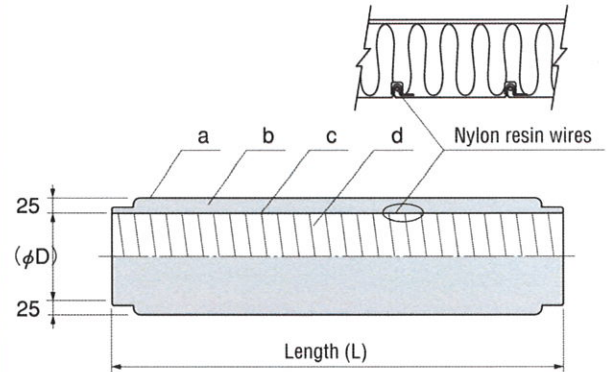
* The above use range show recommended values. For

Noise-reduction performance



* Noise reduction evaluation value (evaluation per 1 m)

Construction

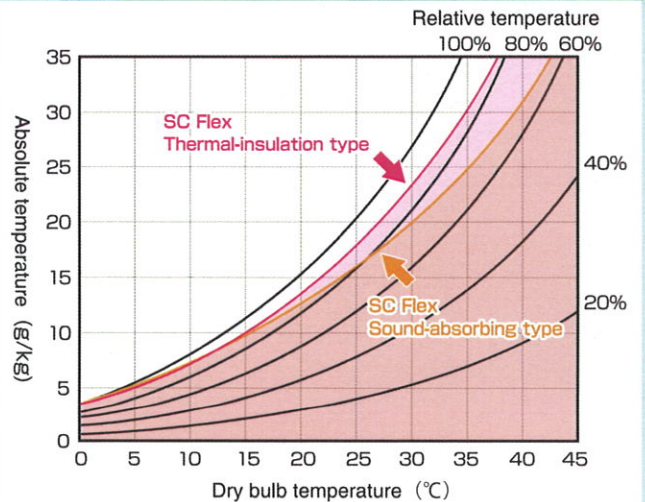


- a. Outer layer material: Polyolefin-based film
- b. Thermal-insulation material: Glass wool 25t
- c. Core material: Galvanized steel wires
- d. Inner layer material: (Sound absorbing) Polyester nonwoven fabric
(Thermal insulation) Polyester film

Cautions

- Do not expose SC Flex to direct fire or water.
- Do not damage SC Flex with a sharp object.
- Avoid installing SC Flex near pipes, boilers, steam pipes, or the like, that are heated to high temperatures.

Thermal insulation/ dew condensation prevention



* The above data shows reference values.

Now, GW Flex(Class 0) products are also available!!

GW Flex

IN Type (Sound-absorbing)

IP Type (Thermal-insulation)

**Certified BS476
Part6 and Part7
Class 0**