

Insulating Bolt • Nut, Insulating Sleeve, Insulating Washer

Insulating Bolt • Nut



Insulating Sleeve

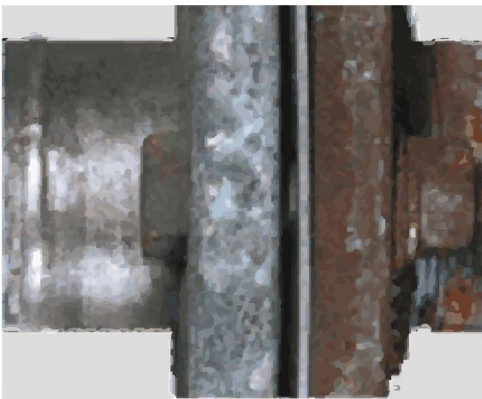


Insulating Washer



Usage

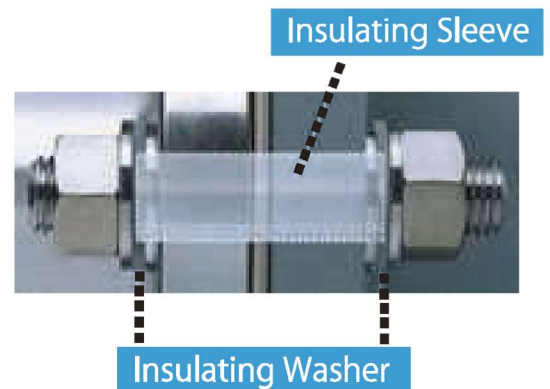
Example of electrolytic corrosion due to dissimilar metals bonding



When dissimilar metals are bonded in soil etc., potential difference occurs between them. As a result, corrosion occurs.

To prevent electrolytic corrosion

Usage example of Insulating sleeve and washer



As shown in the photograph, it is possible to prevent electric corrosion. This is because between flanges or between flange and bolt-nut are insulated.

- Water and sewerage, Bridges, Air-conditioning, Gas, Refinery, Power plant etc.

Features

Insulating Bolt•Nut, Insulating Sleeve, Insulating Washer

Insulating Material : Teflon

Insulation resistance is large , and weather resistance and mechanical property are superior.

Insulating Bolt • Nut

Sleeve is used as the insulating material.

Problems such as pinholes and peeling does not occur.